

**Questions 1 – 6**

Do the following statements agree with the information given in Reading Passage 1?

In boxes 1 – 6 on your answer sheet, write

**TRUE** if the statement agrees with the information

**FALSE** if the statement contradicts the information

**NOT GIVEN** if there is no information on this

- 1 In his study of prehistoric life, Peter Falkingham rarely spends time on outdoor research these days.
- 2 Several attempts are usually needed before the computer model of a dinosaur used by Sellers and Manning manages to stay upright.
- 3 When the Sellers and Manning computer model was used for people, it showed them moving faster than they are physically able to.
- 4 Some palaeontologists have expressed reservations about the conclusions reached by the Manchester team concerning the movement of dinosaurs.
- 5 An experienced tracker can analyse fossil footprints as easily as those made by live animals.
- 6 Research carried into the composition of prehistoric mud has been found to be inaccurate.

**Questions 7 – 9**

Label the diagram below.

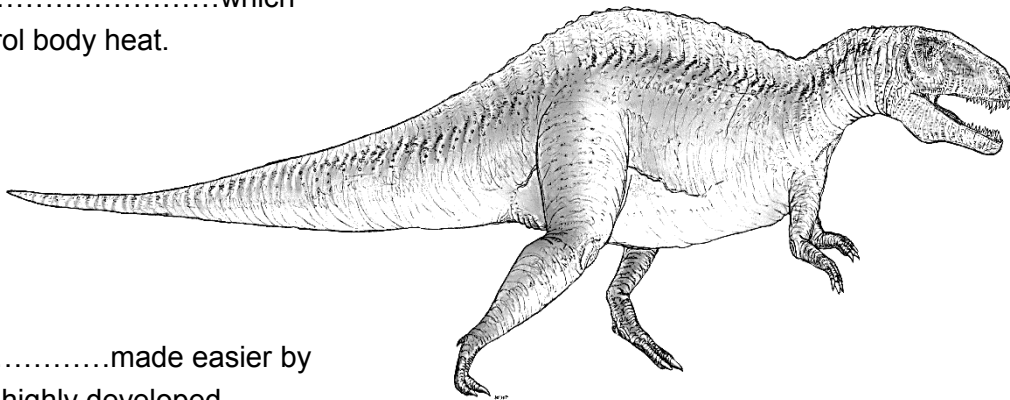
Choose **NO MORE THAN ONE WORD** from the passage for each answer.

Write your answers in boxes 7 – 9 on your answer sheet.

**A model of an acrocanthosaurus**

Dinosaur's name comes from spines.  
One theory: they were necessary to hold up a 7.....which helped control body heat.

Skull is 8.....compared with rest of body.



9.....made easier by wide tail and highly developed muscles in legs.

**Questions 10 – 16**

Complete the flowchart below.

Write **NO MORE THAN TWO WORDS** for each answer.

**Peter Falkingham's computer model**

